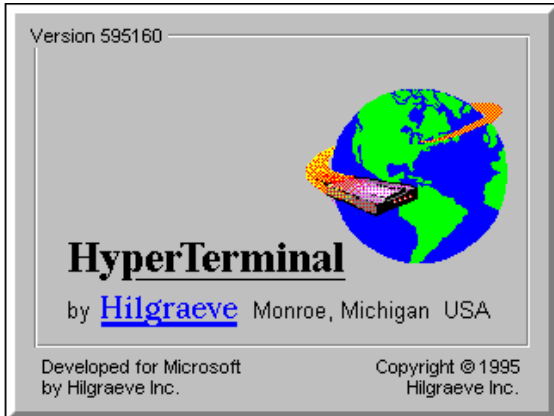


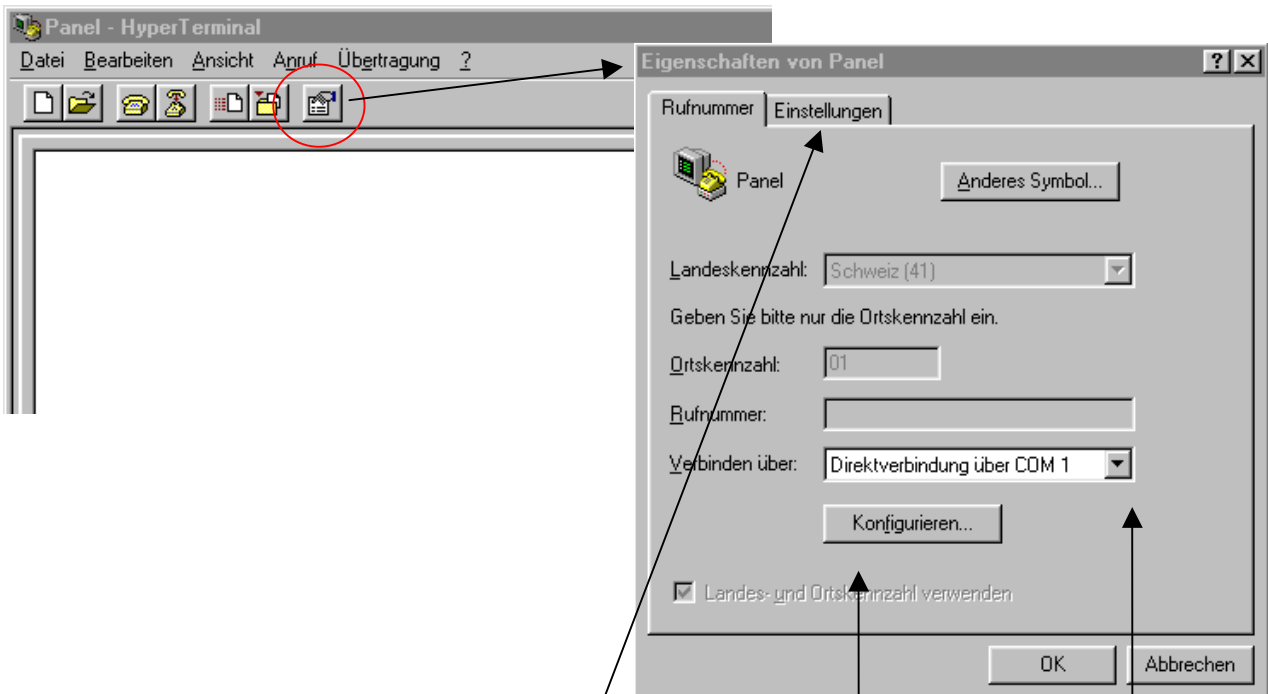
HyperTerminal communication between the Infratek Power Analyzers and your PC.

If you are using an Infratek Power Analyzer with a serial interface (RS-232 interface) installed there is an easy way to check the communication between the Power Analyzer and your desktop- or notebook computer with the **HyperTerminal** terminal program. HyperTerminal is usually installed with every Microsoft operating system installation. You will find HyperTerminal in the accessory directory:

Start → Programs → Accessories → HyperTerminal



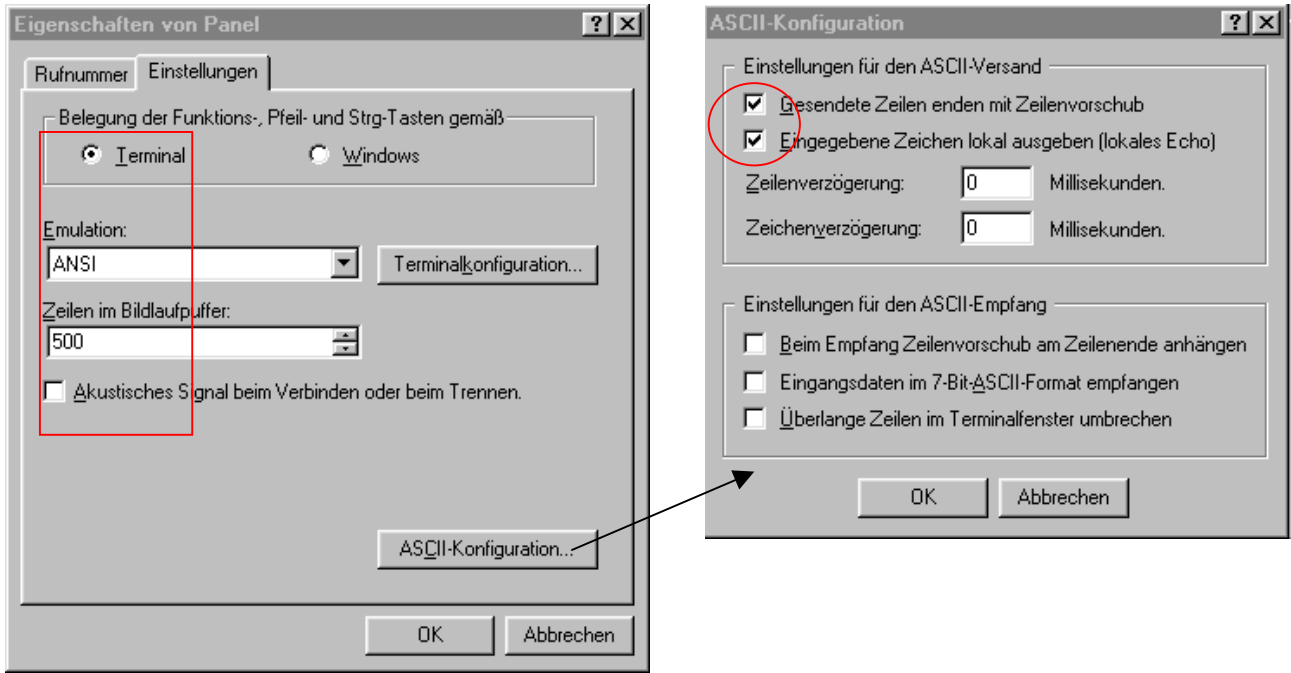
The following HyperTerminal Panel will appear. Press Preferences to configure the HyperTerminal.



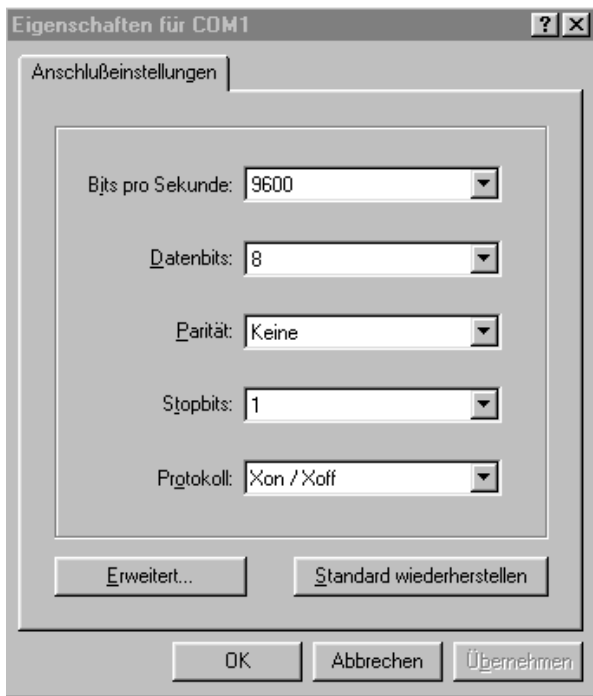
1. Settings

2. Configure

3. Connect to.....



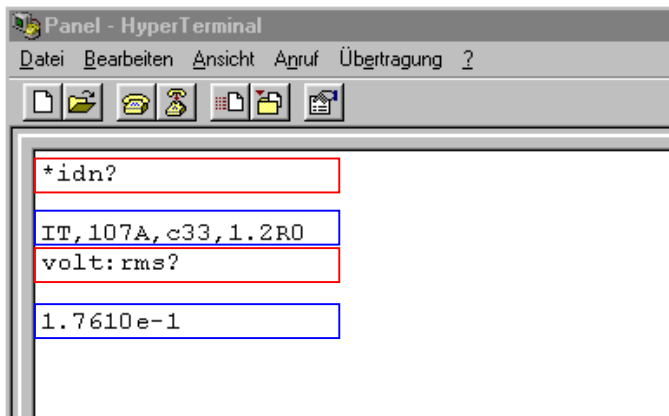
To configure the COM1 press Configure. The next window will pop-up.....



After finishing the configuration you can now go to connect to the Infratek instruments:



Press Connect to open a connection to the Infratek instruments



- 1) Type: *idn? Press ENTER
 Result: IT, 107A,c33,1.2R0 ID-string transmitted from the 107A Power Analyzer

- 2) Type: volt:rms? Press ENTER
 Result: 1.7610e-1 Voltage rms value